

# Kingsmagnet<sup>®</sup>

Honesty•Efficiency•Supremacy

## Rubber Coated Magnet

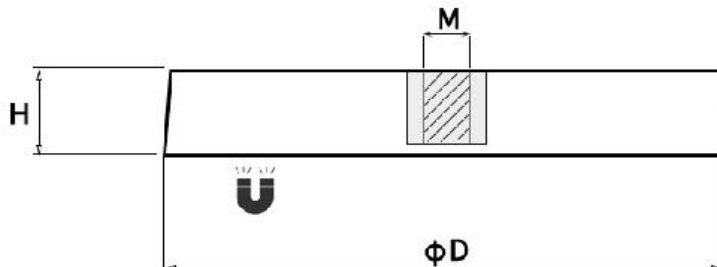


厦门顶磁磁业有限公司

XIAMEN KINGS MAGNET CO., LTD.

## Rubber Coated Magnet

### 1. Rubber Coated Magnet - Inertial Thread

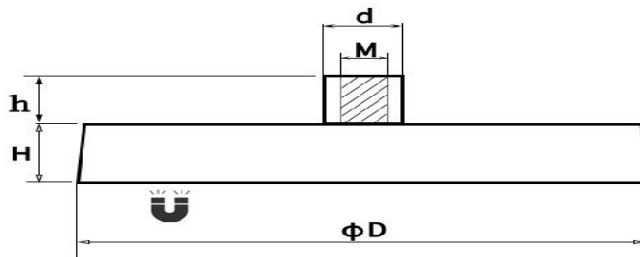


Model	D(mm)	M	H(mm)	Weight (g)	Pull Force(KG)
KM01A-22	22	M3-M6	7	10	3.5
KM01A-28	28	M3-M6	8.5	18	5.5
KM01A-31	31	M3-M6	7	19	7.5
KM01A-34	34	M3-M6	6	20	6
KM01A-36	36	M3-M6	7	22	7.5
KM01A-43	43	M3-M6	6	30	8
KM01A-55	55	M4-M10	8.5	68	18
KM01A-66	66	M4-M10	8.5	97	20
KM01A-88	88	M5-M12	8.5	175	40
KM01A-135	135	M5-M12	8.5	418	55



## Rubber Coated Magnet

### 2. Neodymium rubber coated magnet, with screwed

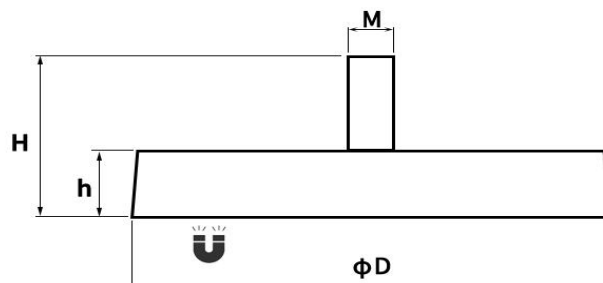


Model	D(mm)	M	H(mm)	d(mm)	h(mm)	Weight(g)	Pull Force(KG)
KM01B-22	22	M3-M6	6	8	5.5	11	3.5
KM01B-28	28	M3-M6	8.5	8	4.5	29	5.5
KM01B-31	31	M3-M6	6	8	5.5	22	7.5
KM01B-34	34	M3-M6	6	8	8	22	6
KM01B-36	36	M3-M6	7	8	4.5	24	7.5
KM01B-43	43	M3-M6	6	8	4.5	32	8
KM01B-55	43	M3-M6	8.5	12	5.5	72	18
KM01B-66	66	M4-M10	8.5	12	5.5	101	20
KM01B-88	88	M5-M12	8.5	15	5.5	178	40
KM01B-135	135	M5-M12	8.5	15	5.5	420	55



## Rubber Coated Magnet

### 3. Rubber Coated Magnet - External Thread

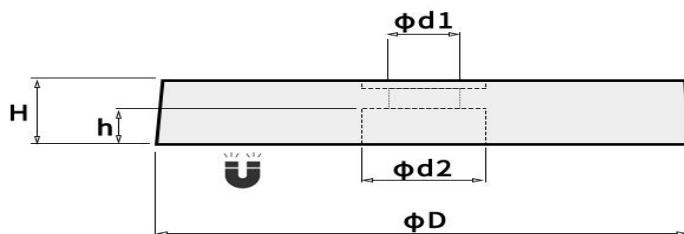


Model	D(mm)	M	h(mm)	H(mm)	Weight(g)	Pull Force(KG)
KM01C-22	22	M3-M6	6	12	12	3.5
KM01C-28	28	M3-M6	8.5	23.5	30	5.5
KM01C-31	31	M3-M6	6	21	22	7.5
KM01C-34	34	M3-M6	6	16.5	25	6
KM01C-36	36	M3-M6	7	22	25	7.5
KM01C-43	43	M3-M6	6	21	34	8
KM01C-55	55	M4-M10	8.5	23.5	71	18
KM01C-66	66	M4-M10	8.5	23.5	100	20
KM01C-88	88	M5-M12	8.5	23.5	185	40
KM01C-135	135	M5-M12	8.5	23.5	428	55



## Rubber Coated Magnet

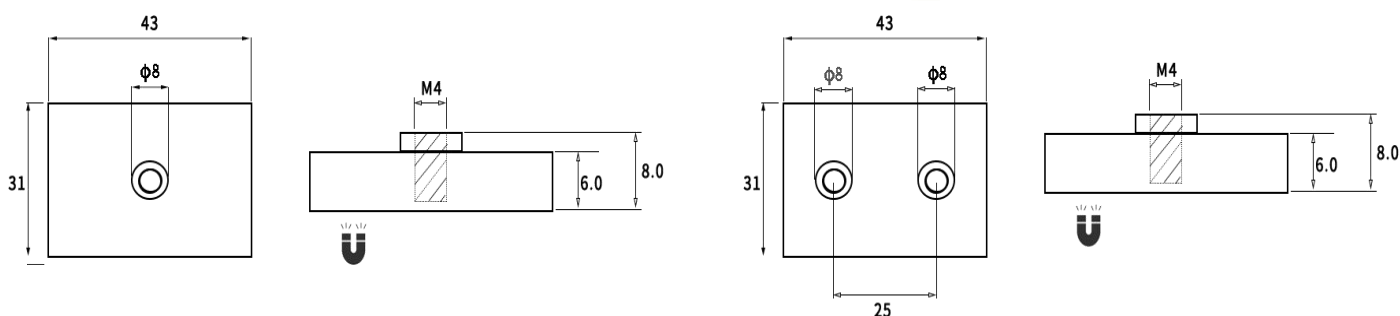
### 4. Rubber Coated Magnet - Cylinder Bore



Model	D(mm)	H(mm)	h(mm)	d1(mm)	d2(mm)	Weight(g)	Pull Force(KG)
KM01E-22	22	6	3	4.5	8	11	2
KM01E-31	31	6	3	4.5	9	17	7.5
KM01E-34	34	8	4	4.5	9.5	20	6
KM01E-43	43	6	2	5.5	12.8	28	8.5
KM01E-55	55	8.5	3	5.5	20	66	18
KM01E-57	57	8	4	5.5	12	77	18
KM01E-66	66	8.5	3	5.5	20	95	20
KM01E-88	88	8.5	3	6.5	22	172	40

## Rubber Coated Magnet

### 6. Rubber Coated Magnet - Rectangular Shape



Model	L(mm)	W(mm)	H(mm)	M	Weight (g)	Pull Force(KG)
KM01G43-1	43	31	6	M4*1	27	8.5
KM01G43-2	43	31	6	M4*2	28	8.5

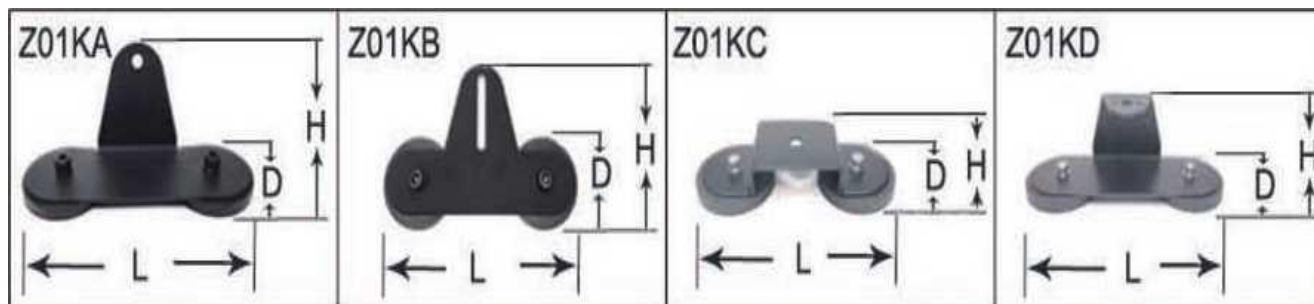
### 5. Rubber Coated Magnet With Handle



Model	D(mm)	H(mm)	h(mm)	Weight(g)	Pull Force(KG)
KM01H-43	43	68	6	42	8.5
KM01H-66	66	98	8	118	22
KM01H-88	88	98	8	205	45

## Rubber Coated Magnet

### 7. Rubber Coated Magnet - Magnetic Sucker Holder

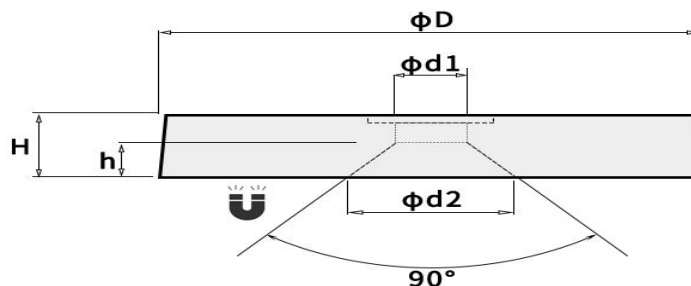


Model	D(mm)	L(mm)	H(mm)	Weight(g)	Pull Force(KG)
KM01KA6	66	185	78	880	72
KM01KA8	68	210	78	1260	160
KM01KB66	66	185	120	810	72
KM01KB88	68	210	130	1200	160
KM01KC66	66	170	30	780	72
KM01KC88	68	195	30	1160	160
KM01KD66	66	185	60	800	72
KM01KD88	68	210	30	1280	160



## Rubber Coated Magnet

### 8. Neodymium rubber coated magnet, with counter bore



Model	D(mm)	H(mm)	d1(mm)	d2 (mm)	Weight(g)	Pull Force(KG)
KM01D-22	22	6	3.5	6.5	11	2
KM01D-28	28	8.5	4	8.2	27	8.5
KM01D-31	31	6	4.5	9	18	7.5
KM01D-34	34	8	4.5	8.6	20	6
KM01D-36	36	7	5.5	10.5	22	7.5
KM01D-43	43	6	6.5	12.8	30	8.5
KM01D-55	55	8.5	6.5	12	68	18
KM01D-57	57	8	5.5	10.6	77	18
KM01D-66	66	8.5	6.5	12	97	20
KM01D-88	88	8.5	6.5	12	175	40

