

Kingsmagnet[®]

Honesty•Efficiency•Supremacy

Pot Magnet(NdFeB)



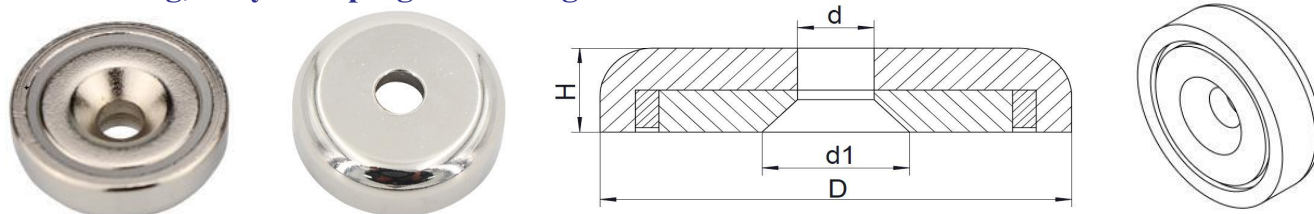
厦门顶磁磁业有限公司

XIAMEN KINGS MAGNET CO., LTD.

Pot Magnet(NdFeB)

1.Pot Magnet - Countersunk Hole - SNA

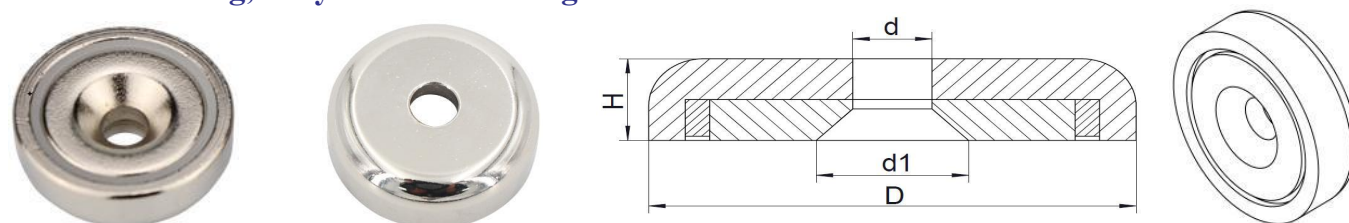
--Nickel coating,Body stamping machining



Model	D(mm)	d(mm)	D1(mm)	H(mm)	Weight(g)	Breakaway(KG)
SNA12	12	3.5	6.5	4.5	4	2.5
SNA16	16	3.5	6.5	5	7	6
SNA20	20	4.5	8.6	7	14	11
SNA25	25	5.5	10.6	8	25	20
SNA32	32	5.5	10.6	8	42	32
SNA36	36	6.5	11.3	8	54	43
SNA42	42	6.5	11.3	8.6	78	65

2.Pot Magnet - Countersunk Hole - LNA

—Nickel coating,Body lathe machining

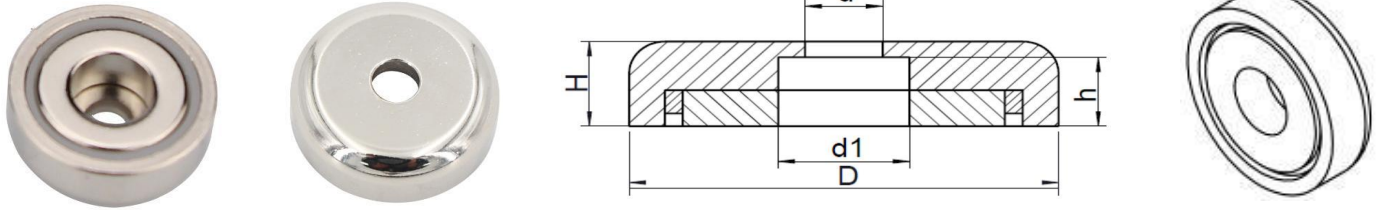


Model	D(mm)	d(mm)	d1(mm)	H(mm)	Weight(g)	Breakaway(KG)
LNA48	48	8.5	15.5	11	138	75
LNA55	55	8.5	14.5	12	205	95
LNA60	60	8.5	14.5	15	305	160
LNA70	70	10.5	16.5	17	485	210
LNA75	75	10.5	16.5	18	560	250
LNA80	80	10.5	16.5	18	668	280
LNA90	90	10.5	16.5	18	850	380
LNA120	120	12.5	22.5	18	1520	480

Pot Magnet(NdFeB)

3.Pot Magnet - Through Hole - SNB

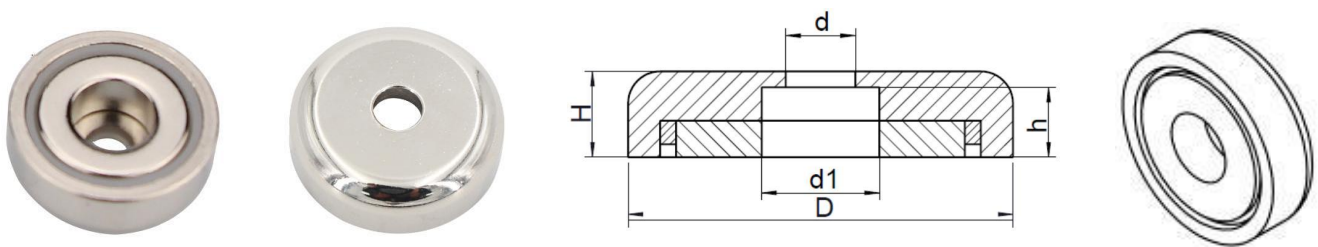
--Nickel coating,Body stamping machining



Model	D(mm)	d(mm)	d1(mm)	H(mm)	Weight(g)	Breakaway(KG)
SNB12	12	3.5	6.5	4.5	4	2
SNB16	16	3.5	6.5	5	7	5
SNB20	20	4.5	8	7	13	10
SNB25	25	5.5	9	8	19	18
SNB32	32	5.5	9	8	38	30
SNB36	36	6.5	11	8	48	40
SNB42	42	6.5	11	8.6	70	60

4.Pot Magnet - Through Hole - LNB

—Nickel coating,Body lathe machining

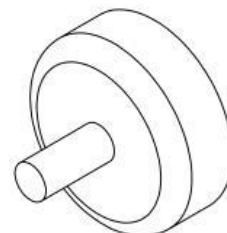
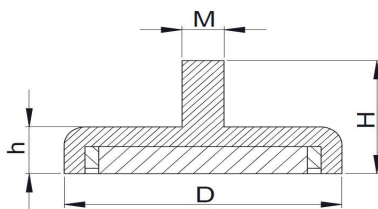


Model	D(mm)	d(mm)	d1(mm)	H(mm)	Weight(g)	Breakaway(KG)
LNB48	48	8.5	15	11	115	72
LNB60	60	8.5	15	15	240	150
LNB75	75	10.5	18	18	515	220

Pot Magnet(NdFeB)

5.Pot Magnet - External Thread - SNC

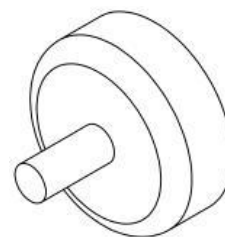
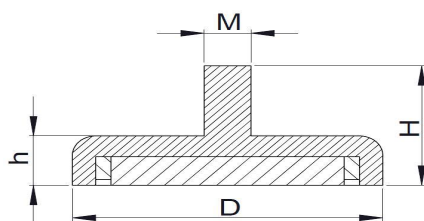
—Nickel coating,Body stamping machining



Model	D(mm)	M	H(mm)	h(mm)	Weight(g)	Breakaway (KG)
SNC10	10	M3	14	5	4	2
SNC12	12	M3	14	5	5	4
SNC16	16	M4	13.2	5	8	8
SNC20	20	M4	16	7	17	12
SNC25	25	M5	17	8	30	23
SNC32	32	M6	18.5	8	50	34
SNC36	36	M6	18	8	62	50
SNC42	42	M6	18	8.6	89	72

6.Pot Magnet - External Thread - LNC

—Nickel coating,Body lathe machining

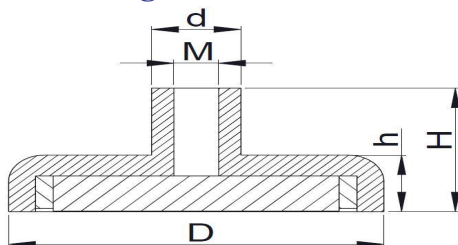


Model	D(mm)	M	H(mm)	h(mm)	Weight(g)	Breakaway(KG)
LNC48	48	M8	24	11	152	81
LNC60	60	M8	28	15	325	160
LNC75	75	M10	35	18	620	250

Pot Magnet(NdFeB)

7.Pot Magnet - Screwed Bush - SND

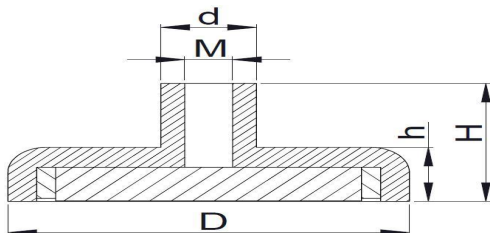
—Nickel coating,Body stamping machining



Model	D(mm)	d(mm)	M	H(mm)	h(mm)	Weight(g)	Breakaway(KG)
SND10	10	6	M3	12.5	5	4	2
SND12	12	6	M3	12.5	5	5	4
SND16	16	6.5	M4	12.6	5	9	8
SND20	20	6.5	M4	14	7	17	12
SND25	25	7.5	M5	17	8	31	23
SND32	32	10	M6	18	8	52	34
SND36	36	10	M6	18	8	60	50
SND42	42	10	M6	18	8.6	95	72

8.Pot Magnet - Screwed Bush - LND

—Nickel coating,Body lathe machining

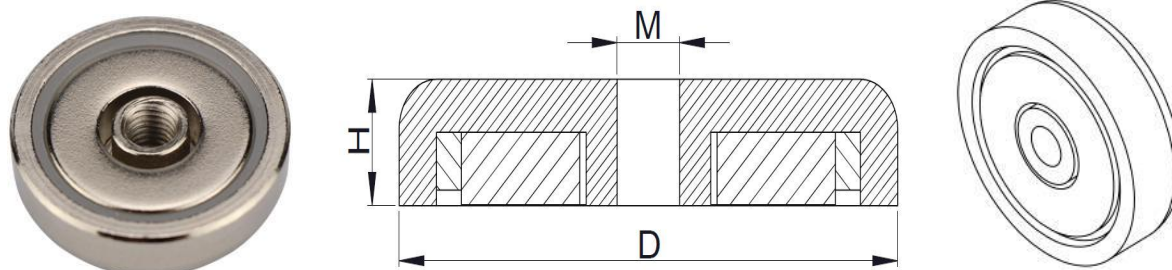


Model	D(mm)	d(mm)	M	H(mm)	h(mm)	Weight(g)	Breakaway(KG)
LND48	48	12	M8	24	11	160	81
LND60	60	12	M8	28	15	340	160
LND75	75	17	M10	35	18	635	250

Pot Magnet(NdFeB)

9.Pot Magnet - Internal Thread-Metric Thread - SNH

—Nickel coating,Body stamping machining

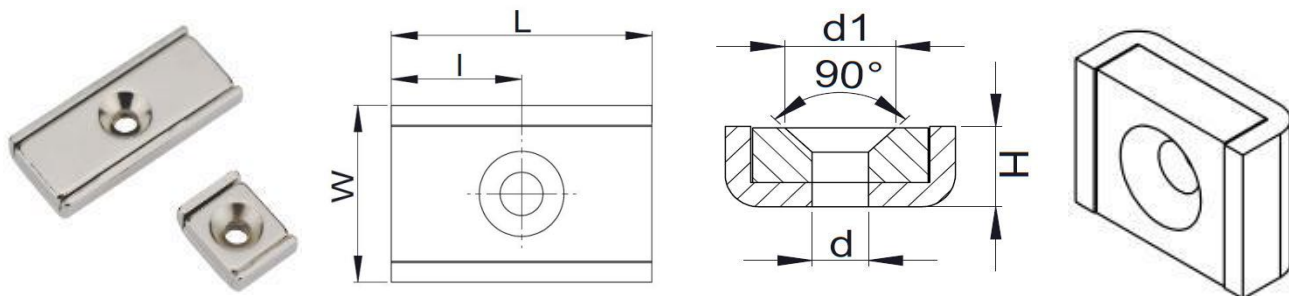


Model	D(mm)	H(mm)	M	Weight(g)	Breakaway(KG)
SNH16	16	5	M3	7	4
SNH20	20	7	M4	14	8
SNH25	25	7.7	M5	25	17
SNH32	32	7.7	M5	44	27
SNH36	36	7.5	M6	55	36
SNH42	42	8.6	M6	86	50
SNH48	48	10.6	M8	132	70
LNH60	60	12	M8	229	140
LNH75	75	15	M10	464	220

Pot Magnet(NdFeB)

10.Rectangular Pot Magnet - One Counter Bore - SNI

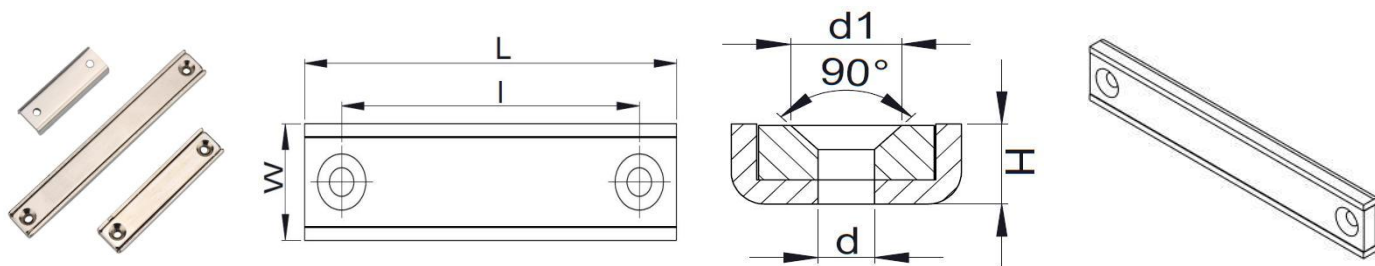
—Nickel coating,Body stamping machining



Model	L (mm)	l (mm)	W (mm)	H (mm)	d (mm)	d1 (mm)	Weight (g)	VertiacI Breakaway (KG)
SNI10	10	5	13.5	5	3.3	6.5	5	4
SNI15	15	7.5	13.5	5	3.3	6.5	7	7
SNI20	20	10	13.5	5	3.3	6.5	10	8
SNI30	30	15	13.5	5	3.3	6.5	15	16

11.Rectangular Pot Magnet - Two Counter Bore - SNI

—Nickel coating,Body stamping machining



Model	L (mm)	l (mm)	W (mm))	H (mm)	d (mm)	d1 (mm)	Weight (g)	VertiacI Breakaway (KG)
SNI40	40	30	13.5	5	3.3	6.5	19	17
SNI50	50	40	13.5	5	3.3	6.5	24	27
SNI60	60	50	13.5	5	3.3	6.5	30	30
SNI80	80	70	13.5	5	3.3	6.5	38	33
SNI100	100	90	13.5	5	3.3	6.5	48	36
SNI120	120	110	13.5	5	3.3	6.5	58	40